



Rieke® (RU/RS) LeverLock Closing Instructions

Document: QA-FM-L257 Date: 4/25/13 Rev: 8 Page: 1 of 3

Proper Application of the Rieke® (RU/RS) LeverLock Ring

Step 1--Place the cover on the pail. Press down along the edges and in the center of the cover to ensure that it is seated properly.

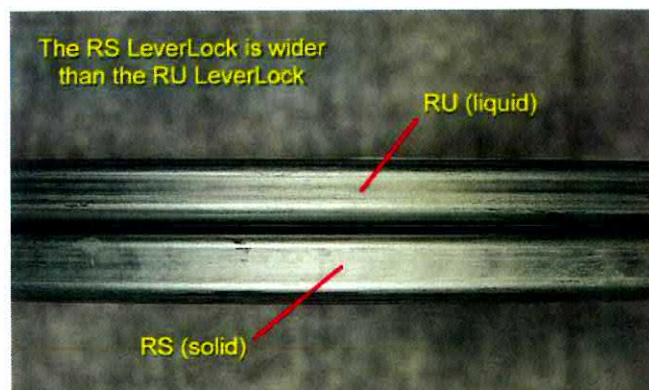
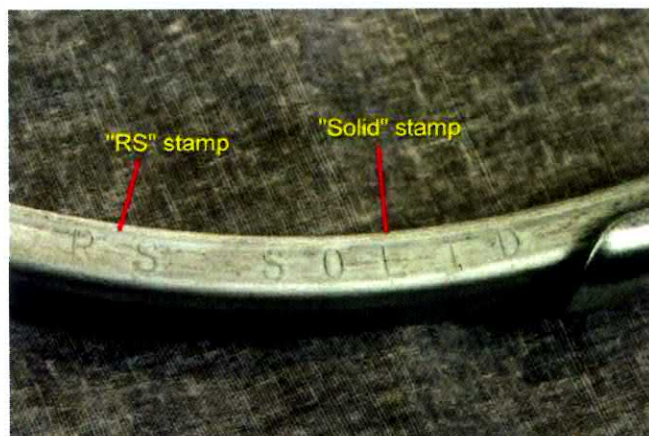
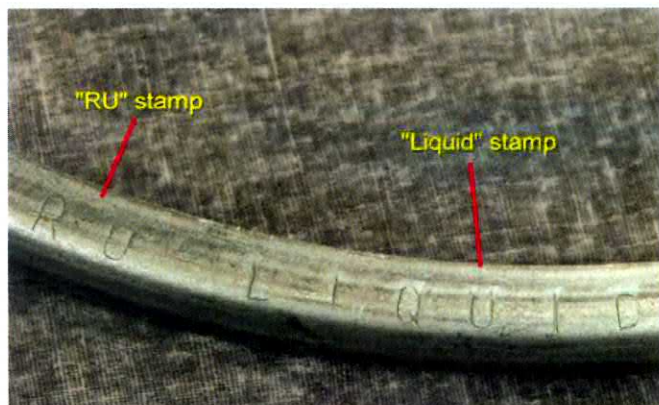


Step 2--Select the proper leverlock ring for the material being packaged.

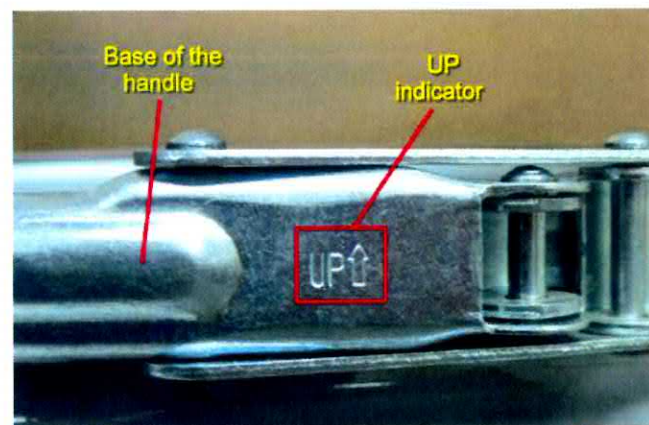
The **RU** leverlock ring is used when packaging **liquids**.

The **RS** leverlock ring is used when packaging **solids**.

The leverlock rings are stamped for the particular application. Also, the RS leverlock ring is wider than the RU leverlock ring.



Step 3--Before placing the leverlock ring on the pail, it must be oriented correctly. There is an **Up indicator** w/ an arrow stamped into the base of the handle. Orient the ring w/ the arrow pointing **up**.

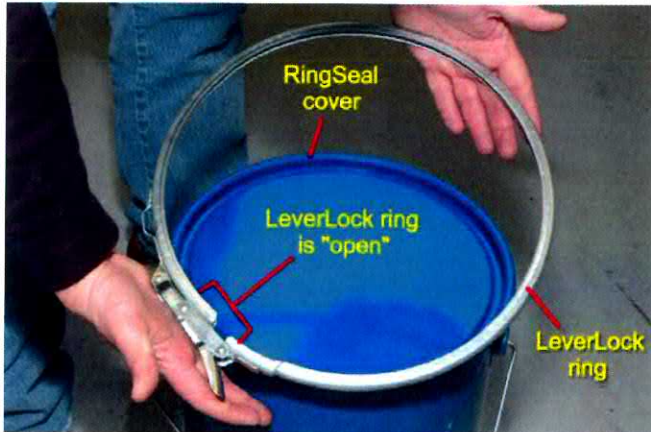




Rieke® (RU/RS) LeverLock Closing Instructions

Document: QA-FM-L257 Date: 4/25/13 Rev: 8 Page: 2 of 3

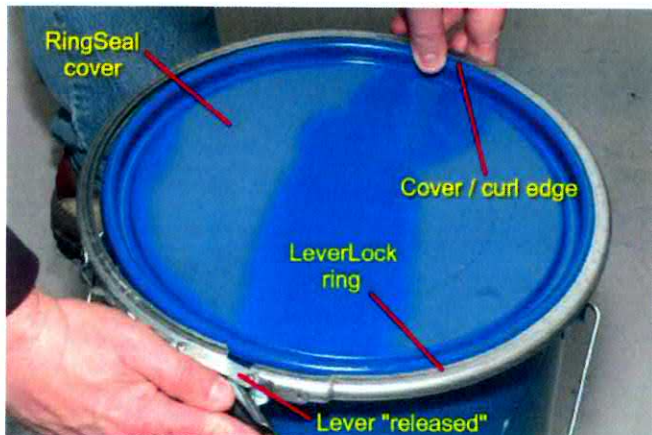
Step 4--Open the leverlock ring as wide as possible, then slip it over the pail. Be sure that the ring is placed on the pail in a manner that allows it to be closed by moving the lever *clockwise* onto the ring.



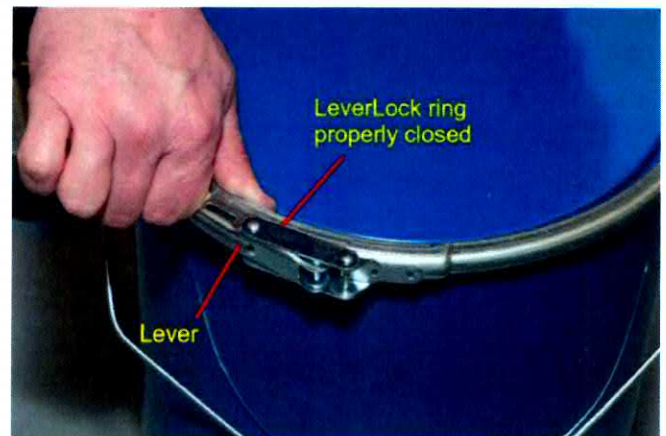
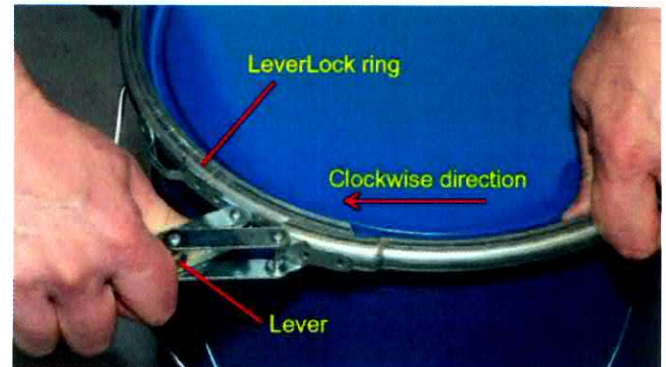
Step 5--Orient the lever on the ring to be opposite of the seam weld (180 degrees from the seam weld).

Step 6--Apply downward pressure to the cover and release the lever, allowing the ring to slide onto the cover/curl edge.

Note: The ring *must* encompass the cover/curl around the entire edge of the pail



Step 7--Close the ring clockwise by applying pressure to the lever until it collapses onto the ring.



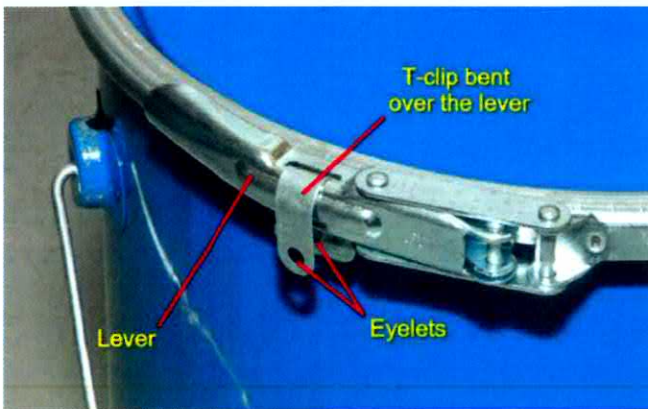
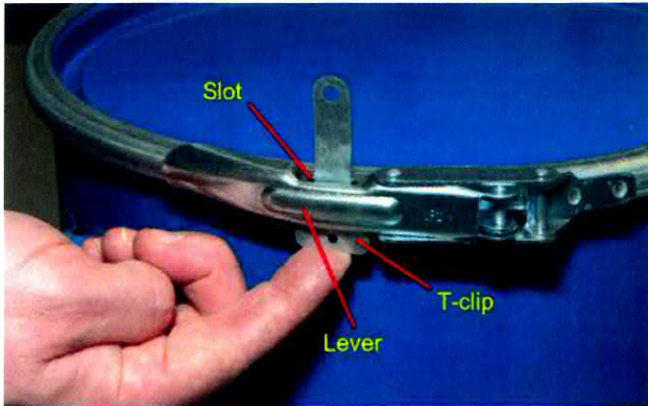
Step 8--Insert the tamper-evident T-clip through the slot in the lever. This will hold the lever in place. The T-clip should also pass through the loop attached to the body of the ring.



Rieke® (RU/RS) LeverLock Closing Instructions

Document: QA-FM-L257 Date: 4/25/13 Rev: 8 Page: 3 of 3

Note: A locking mechanism can be inserted into the eyelet of the latch to make the lever tamper-evident



Step 9--If the ring is locked properly, it cannot be rotated or moved. If the ring slides, it is oversized.



Bolt Ring Closing Instructions

Document: QA-FM-L258 Date: 8/24/12 Rev: 4 Page: 1 of 2

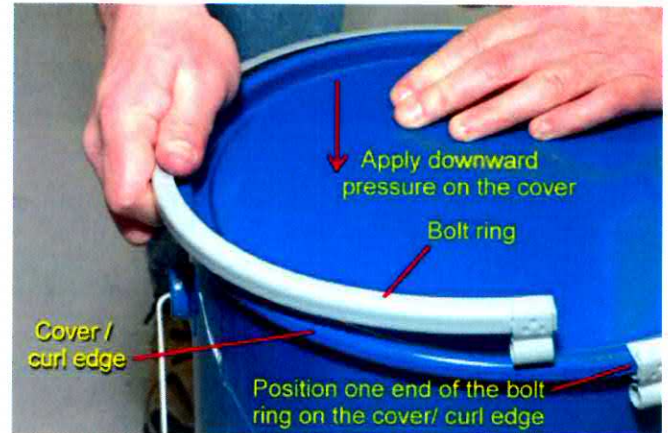
Bolt Ring Closing Instructions (UN RingSeal Cover w/ R5 Bolt Ring)

Step 1-- Place the UN RingSeal cover on the pail. Press down along the edges and in the center of the cover to ensure that it is seated properly on the pail curl.

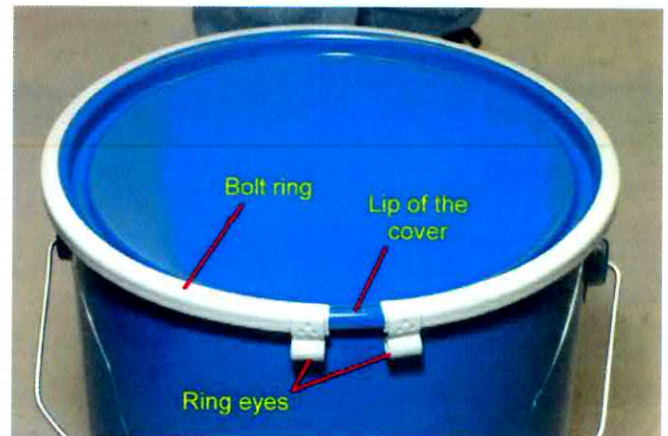


Step 2-- Position the R5 bolt ring around the top of the pail. Start at one end of the bolt ring and work it around the entire perimeter of the cover/curl edge of the pail.

Note: Applying downward pressure on the cover while fitting the bolt ring to the pail will make this task easier



Step 3-- To properly close the pail, the bolt ring should cover the lip of the cover **and** the curl of the pail. Also, the ring eyes must be positioned **down**, below the curl of the pail.



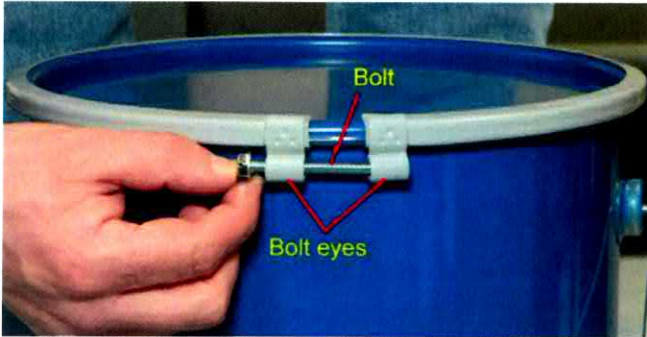
Step 4-- Orient the bolt ring eyes opposite, or 180°, from the seam weld.



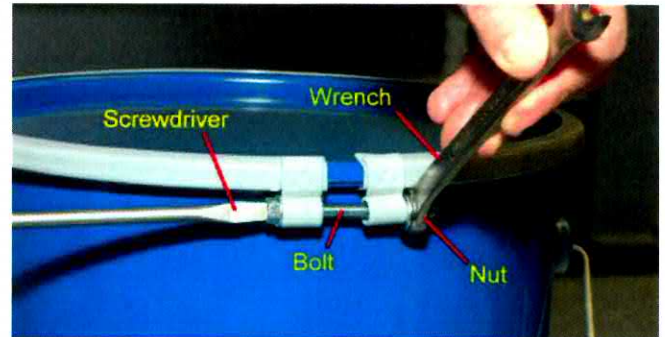
Bolt Ring Closing Instructions

Document: QA-FM-L258 Date: 8/24/12 Rev: 4 Page: 2 of 2

Step 5--Using both hands, squeeze the bolt ring eyes together. Slide the 1/4" bolt through the eyes.



Step 6--Thread the nut onto the 1/4" bolt. Tighten the nut and torque it to 50 in-lbs.



Step 7--Check to proper fit and tightness of the bolt ring. If the bolt ring is torqued properly, it cannot be rotated or moved. If the bolt ring slides, it might be oversized or improperly torqued.

