

CLOSURE INSTRUCTIONS FOR SOLIDS:

Packaging Components required:

- Appropriately marked UN/DOT certified M & M Industries pail
- Matching lid size with trigger attached, gasketed or non-gasketed

2.5, 3.5, 5.0 and 6.5 gallon NON-GASKETED lid: (Engraved MM on lid):

To close, seat lid on top of pail (engraved MM on bottom of pail). Rotate lid clockwise until the small window by the trigger (see Ill. 1) is located to the left of the mark (see Ill. 2) on the side of the pail and continue rotating until the lid is fully tightened (see Ill. 4). **Inspect lid after application to confirm it is properly seated.**

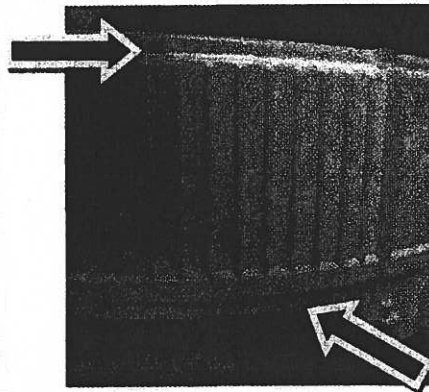
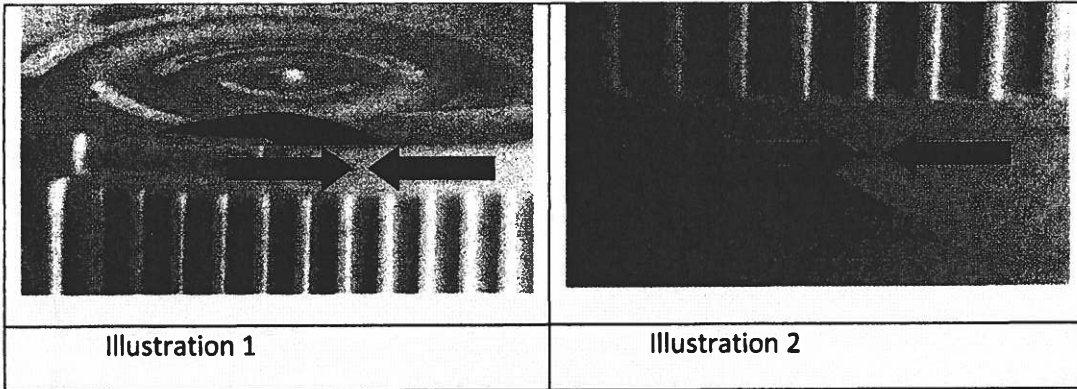


Illustration 4 – Example of lid fully tightened with window to left of mark on pail, non-gasketed lid

2.5, 3.5, 5.0 and 6.5 gallon GASKETED lid: (Marked MM on lid):

To close, seat lid on top of pail (Marked MM on bottom of pail). Rotate lid clockwise until the small window by the trigger (see Ill. 1) is located to the left of the UN mark (see Ill. 3) on the side of the pail and continue rotating until the lid is fully tightened (see Ill. 5). **Inspect lid after application to confirm it is properly seated.**

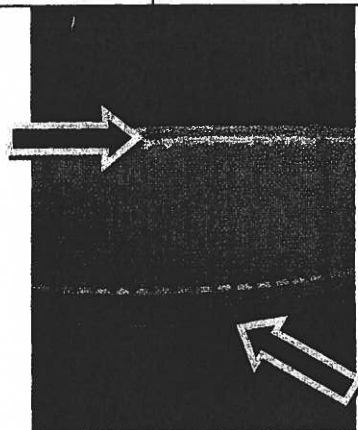
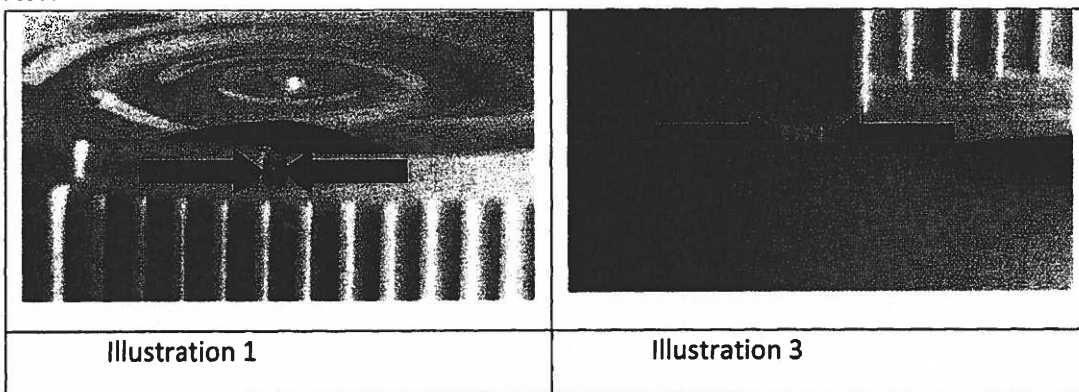
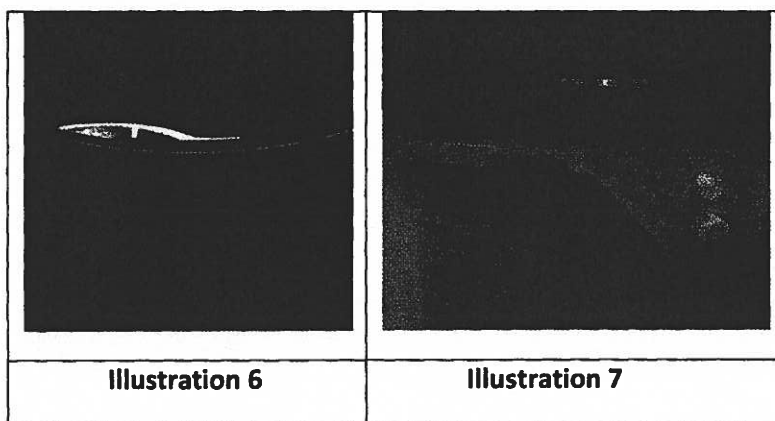


Illustration 5 – Example of lid fully tightened, gasketed pail, window to left of UN mark.

0.6 and 1.25 gallon NON-GASKETED lid:

To close, seat lid on top of pail. Rotate lid clockwise until the trigger post (see Ill. 6) is located to the left of the mark (see Ill. 7) on the side of the pail and continue rotating until the lid is fully tightened. **Inspect lid after application to confirm it is properly seated.**



0.6 and 1.25 gallon GASKETED lid:

To close, seat lid on top of container. Rotate lid clockwise until the trigger post (see Ill. 6) is located to the left of the UN mark (see Ill. 8) on the side of the pail and continue rotating until the lid is fully tightened. **Inspect lid after application to confirm it is properly seated.**

