

M&M INDUSTRIES, INC.

NOTIFICATION FOR M&M INDUSTRIES UN/DOT PACKAGING FOR HAZARDOUS SOLIDS/LIQUIDS

Your goal is to safely transport your valuable product along roads and highways. You want to safely reach your customers and provide them with value while keeping their trust.

While we are legally bound to provide you with the following information, we also want you to know we value your endeavor and want to help you reach your goal, everyday.

Please note that under the **U.S. Department of Transportation's Title 49CFR, Section 173.22**, it is the **Shippers Responsibility** to ensure that an authorized package has been selected for the product they intend to offer for transportation and that the selected package is properly closed for transportation in accordance with the manufacturers notification.

Please do any and all testing and research necessary to ensure that you have selected the proper M&M Industries container for use with your product.

To meet UN/DOT Standards, this package must be properly closed for shipment. Closing instructions have been included in Section A below. Failure to follow the closure instructions or substitutions of the package components other than those identified in the following paragraph will render the UN/DOT Certification invalid.

Packaging Components:

1. Appropriately marked UN/DOT certified M & M Industries container
2. Solid - matching cover size with trigger attached
 - No gasket or with Closed Cell Neoprene gasket (diameter & length as indicated below) or Purform gasket.
 - 0.5 gallon - 0.090" x 19.292"
 - 1.0 gallon - 0.125" x 24"
 - 2.0 - 2.5 gallon - 0.125" x 27"
 - 3.5 - 6.5 gallon - 0.150" x 37.150"
 - 3.5 - 6.5 gallon - 0.150" x 34.79" (New Generation)
 - Liquid - matching cover with thumb catch molded on; sonically sealed spout or no spout
 - Closed Cell Neoprene gasket - 0.250" x 40"
 - Polyethylene Spout - 1.50" opening - total fitting 2.50"

Specifically, the following items pertain to the Life Latch® containers and covers:

1. Life Latch® containers are certified to the UN/DOT performance oriented packaging standards and are marked with the appropriate UN markings on the bottom of the container.
2. The Life Latch® pail must always be used with the Life Latch® cover in order to meet the UN/DOT performance oriented packaging standards.

Section A:

In accordance with the U.S. Department of Transportation's Title 49CFR, Section 178.2, manufacturers of U.N. Standard/DOT Specification packages are required to notify in writing each person to whom that packaging is transferred of all requirements in this part not met at the time of transfer, and with information specifying the type(s) and dimensions of the closures, including gaskets and any other components needed to ensure that the packaging is capable of successfully passing the applicable performance tests. This information must include any procedures to be followed, including closure instructions for inner packagings and receptacles, to effectively assemble and close the packaging for the purpose of preventing leakage in transportation.

CLOSING INSTRUCTIONS:**To meet dry/solid UN marking:**

For **Original Style non-gasketed cover:** (diameter 14.13") – To close, seat cover on top of container. Screw cover on tightly to ensure threaded contact is a minimum of 180 degrees.

For **Original Style gasketed cover:** (diameter 14.13") – To close, seat cover on top of container. Screw cover on tightly to ensure threaded contact is a minimum of 90 degrees.

For **New Generation 3.5, 5.0 and 6.5 gallon non-gasketed cover:** (Diameter 12.750" – marked MM) - To close, seat cover on top of container (marked on outside bottom MM). The small window (see Ill. 1) by the trigger must pass the mark (see Ill. 2) on the side of the container. Screw cover on tightly to ensure threaded contact is a minimum of 180 degrees.

For **New Generation 3.5, 5.0 and 6.5 gallon gasketed cover:** (Diameter 12.750" – marked MM) – To close, seat cover on top of container – marked on outside bottom MM). The small window (see Ill. 1) by the trigger must pass the UN mark (see Ill. 3) on the side of the container. Screw cover on tightly to ensure threaded contact is a minimum of 90 degrees.

For **New Generation 0.6 and 1.25 gallon non-gasketed cover:** To close, seat cover on top of container. Trigger post (see Ill. 4) must pass the mark (see Ill. 5) on the side of the container. Screw cover on tightly to ensure threaded contact is a minimum of 180 degrees.

For **New Generation 0.6 and 1.25 gallon gasketed cover:** To close, seat cover on top of container. Trigger post (see Ill. 4) must pass the UN mark (see Ill. 6) on the side of the container. Screw cover on tightly to ensure threaded contact is a minimum of 90 degrees.

To meet liquid UN marking:

For liquids, turn cover a complete 360 degrees with the threads fully engaged. For ease of application, use built-in hand lever on cover.

NOTIFICATION FOR M&M INDUSTRIES UN/DOT PACKAGING FOR HAZARDOUS SOLIDS/LIQUIDS

An appropriate UN marking must be maintained for each M&M Industries container design.

The UN markings for all of M&M Industries containers are defined in Section B below.

Section B:**Marking for:**

0.5 – 6.5 gallon Life Latch® (solid) pail: 1H2/Y*19/S/09 USA/M2074

11.3 gallon Life Latch® (solid) pail: 3H2/Y40/S/09 USA/M2074

5.0 gallon (liquid) pail: 1H2/Y1.5/30/09 USA/+AA2161

Package Type:	1	Identifies a drum
Package Type:	3	Identifies a jerrican
Package Material:	H	Identifies plastic
Package Category:	2	Identifies removable head
Packing Group:	Y	Identifies the package is approved for Packing Group II and Packing Group III hazardous materials
Liquid: gravity	1.5	Identifies the package is certified for liquids not to exceed a specific of 1.5 (Ensure the specific gravity of your hazardous liquid does not exceed 1.50)
*Authorized Gross Mass:	19	Identifies the authorized gross mass in Kg that the package is certified to. The authorized gross mass changes based on the size of container. The authorized gross mass for all container sizes are listed below.
Liquid:	30	Identifies the hydrostatic test pressure in kPa that the container is certified to.
Intended for Solids:	S	Identifies the package is approved for solids only
Year of Package Manufacture:	09	Identifies the package was manufactured in 2009
Country Authorizing Allocation of the Mark:	USA	Identifies the country or origin
Registered Symbol of Party Taking Responsibility For the mark:	M2074	Identifies M&M Industries, Inc. – Chattanooga, TN
Liquid:	+AA2161	Identifies the 3 rd party lab that certified the packaging on behalf of M&M Industries, Inc.

*Authorized Gross Mass For All Life Latch® Pail Sizes

0.5 Gallon pail:	4kg	3.5 Gallon pail:	19kg
1.0 Gallon pail:	6kg	5.0 Gallon pail:	30kg
2.0 Gallon pail:	12kg	5.5 Gallon pail:	30kg
2.5 Gallon pail:	15kg	6.5 Gallon pail:	30kg

Illustration 1

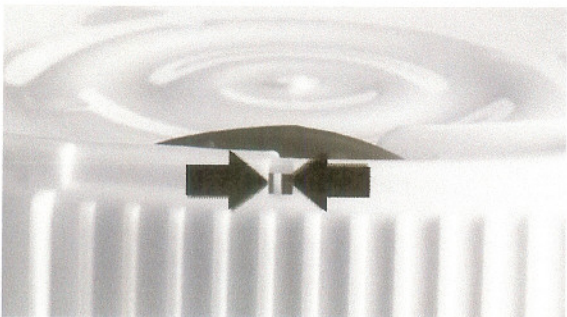


Illustration 2

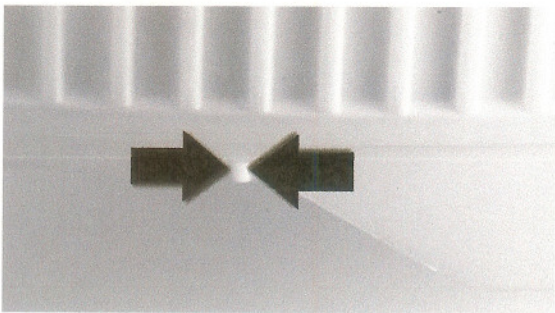


Illustration 3

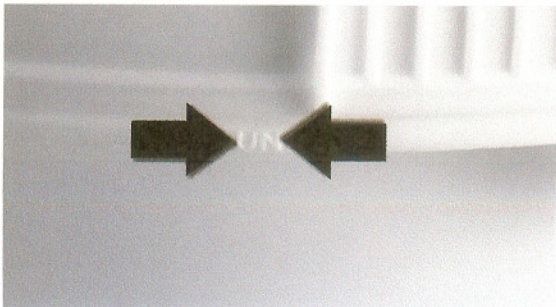


Illustration 4



Illustration 5

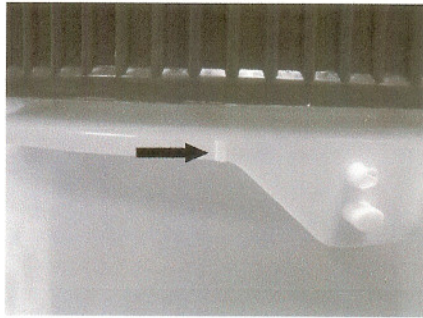
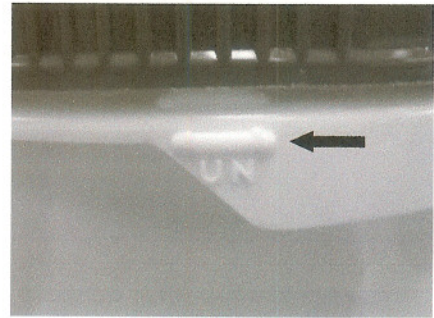


Illustration 6



Should you have any questions, please contact customer service at (800) 331-5305.