

Triumvirate Environmental's

Quick & Easy Guide to Mold Remediation

MOLD REMEDIATION

Table of Contents

- Why Remediate?
- Remediation Equipment Checklist
- Safety Precautions: Dos and Don'ts
- Mold Remediation: Step by Step

Why Remediate?

MOLD REMEDIATION

The answer to this question may seem self evident. **It's mold.** But when the remediation process becomes more complex, ignoring the mold might seem like the simplest solution.

Here are some benefits to remediating mold at your facility:

- Minimize employee exposure to harmful mold structures and spores
- Reduce liability associated with mold exposure
- Improve the integrity and appearance of your building
- Prevent future mold infestations

Remediation Equipment Checklist

PPE Checklist

- Fully sealed goggles and a respirator for any times you'll be in direct contact with mold
- For an area less than 10 square feet:
 - Paper Coveralls and disposable gloves, taped closed at the extremities
- For an area larger than 10 square feet:
 - Tyvek suit, gloves, and overshoes

- HEPA Vacuum
- Wet vacuum
- Large fan
- Box cutter/utility knife
- Mop and bucket
- Personal Protective Equipment (PPE)
- Trash bags and duct tape
- Sponges/steel wool/sterile wipes
- Fungicidal detergent and paint
- Containment/drop cloth



Safety Precautions:

Dos and Don'ts

DO:

- Keep employees out of the affected area
- Dry any damp materials

DON'T:

- Move furniture, rip up carpeting, tear down wallpaper until mold remediation can begin in full
- Randomly slosh bleach in the affected areas
- Expect to get rid of mold fully on your own



Mold Remediation:

Step-by-Step

The Steps:

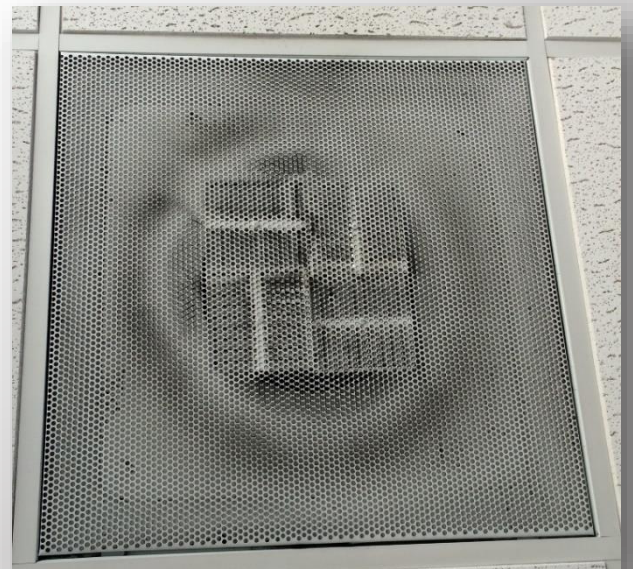
- 1) Contain the Mold
- 2) Dry the Area
- 3) Make Plumbing Fixes
- 4) Determine the Extent of the Mold
- 5) Remediate
- 6) Call in the Experts
- 7) Post-Remediation Monitoring

Step One: Contain the Mold

Once you have determined that you have mold, every effort should be made to minimize your employee's exposure to the mold.

This includes:

- Moving employees to a mold-free part of the building
- Sealing off the area using plastic and tape
- Shutting off air flow from the affected area



Step Two:

Make Plumbing Fixes

It's important to stop the thing that's causing the mold. Often times this means making fixes to plumbing in the area.

- This step may include a call to your plumber, but sometimes the fix will be as simple as tightening a nut or taping a pipe
- Some mold is caused by dampness unrelated to plumbing. Check cold rooms, windows, the roof, and material in contact with soil.



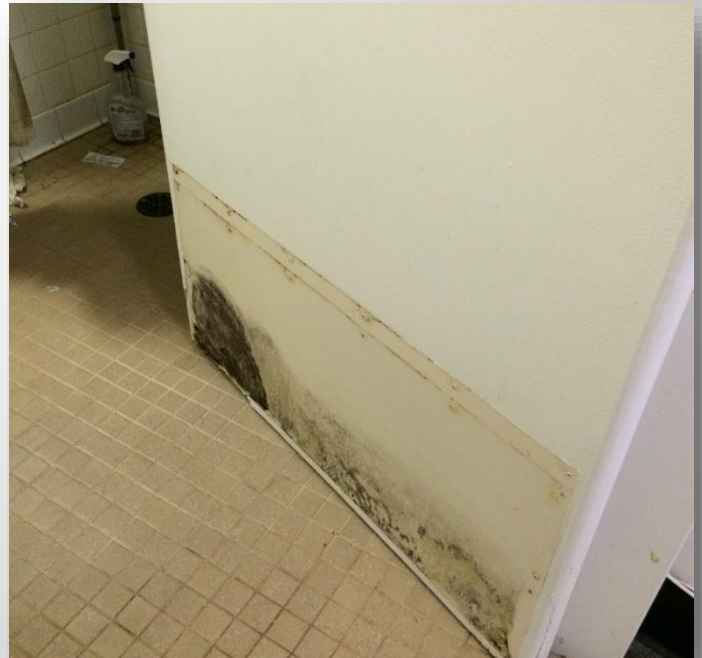
Step Three:

Dry the Area

Remediation cannot begin until the moisture issue has been resolved.

Make sure to:

- Dry carpeting, curtains, and textiles
- Use a wet vacuum on soaked materials like concrete
- Moisture can lurk between flat surfaces and in walls, so be sure to check these areas carefully



Evidence of hidden trapped moisture

Step Four:

Quantifying Mold

This step is fairly straightforward and should be performed to assess whether you can perform a remediation on your own **or if you should bring in a professional.**

If you have less than 10 square feet of mold infestation, then you can likely remediate to a fair extent on your own. It is important to note that a mold problem **is more than meets the eye**. A trained professional will be able to determine the full extent of your mold problem, and therefore how to treat it effectively.

If your mold infestation spans **more than 10 square feet or has expanded deep into a wall, floor, ceiling, or HVAC system**, then the area should undoubtedly undergo professional remediation.

Step Five:

Remediate

Once your employees are safe, the area is dry, and source is fixed, you can start to dissect your mold problem.

- To begin, remove any items or materials that are overgrown with mold. Focus on materials like wood, cloth, paint, and carpeting, as these are particularly hard to clear of mold
- Use a HEPA vacuum on solid surfaces in mold-affected areas
- Materials that need to be removed should be disposed of in sealed plastic trash bags
- For less overgrown areas on solid substrates (tile, linoleum, metal), a thorough scrub with some fungicidal detergent and steel wool or a sponge will do the trick

NOTE: Amateur remediation is not recommended for mold covering more than 10 square feet.

Step Five: Remediate (cont.)

- HVAC systems should be exclusively dealt with professionally, as these systems can spread mold far quicker and broader
- Replace all damaged building materials with dry, new materials
- Purchasing a fungicidal paint or additive is highly recommended when repainting



Step Six:

Call in the Experts

Expert remediation is strongly recommended by OSHA for mold infested areas larger than 10 square feet.

A mold remediation specialist will be able to take accurate samples **to better understand** the Extent of the mold problem.

From here, the samples will indicate the kinds of mold present in your building, and your remediation team can **formulate a plan** based on the specific molds identified.

This plan will likely include a thorough inspection of air flow, moisture management, and other such factors.

The Professional Remediation Process

Your mold remediation expert team will **conduct a thorough investigation of the source of the mold** as well as contain the mold, replace problematic building materials, and take measures to prevent the return of mold.

Suggestions will be made as to how to prevent future mold flare-ups.



Step Seven:

Post-Remediation Monitoring

After your mold problem has been taken care of, tests will have to be done **to assure the effectiveness of remediation procedures.**

This will likely include subsequent brief visits to your building for testing that shouldn't take more than two hours and is **minimally invasive.**

From here, there are two options:

1. Your property will be cleared of all harmful mold
2. Subsequent remediation will be necessary either in the same area or in a different part of the building

Congratulations, you're mold free!

The battle against mold is always ongoing, but professional remediation gives you a huge advantage. Just as long as you don't allow mold to gain a foothold in your building, these nasty fungi will stay out of your building – and your lungs – for the long run. A mold-free work environment is the only way to have a happy, healthy staff that can get the job done well and on time.



Do you suspect you have mold?

Contact us for a free
remediation assessment.



TRIUMVIRATE
ENVIRONMENTAL

